

GENERAL NOTES

1. ALL AXLES AND SHAFTS ARE CHROME PLATED.
2. ALL ROLLERS AND PIVOT POINTS ARE EQUIPPED WITH TEFLON SELF-LUBRICATING BEARINGS.
3. 3" VERTICAL AND 4" HORIZONTAL TOE CLEARANCE SIDES.
4. ADVANCE LIFTS, INC. TO SUPPLY:
 - (1) PREWIRED 18' LG. POWER CORD (FROM LIFT BASE TO PLUG).
 - (1) UP/DOWN PUSHBUTTON PENDANT TYPE NEMA 1, 3, 3R, 4, 4X.
5. FINISH: BLUE PAINT.
6. TYPICAL ELECTRICAL DIAGRAM FOR THIS UNIT: E22-162.
TYPICAL HYDRAULIC DIAGRAM FOR THIS UNIT: H13-256.

SPECIFICATIONS:

CAPACITY : 8,000 LBS MAX. LIFTING CAPACITY
6,400 LBS MAX. AXLE CAPACITY ENDS

PLATFORM : 84" X 120" SAFETY TREAD DECK
REMOVABLE GUARDRAILS - STEEL
18" X 66" STEEL HINGED BRIDGE WITH CHAIN
42" X 66" CHOCK RAMP- STEEL
75" BETWEEN CYLINDER UPRIGHT (PLTF WIDTH)
SAFETY CHAINS

SPEED : 11 FPM

TRAVEL : 54" (FROM A 6" LOWERED HEIGHT)

LOWERED HEIGHT : 6"

POWER UNIT : 5 HP MOTOR, 230V 60Hz 3PH
SELF CONTAINED AND PRE-WIRED

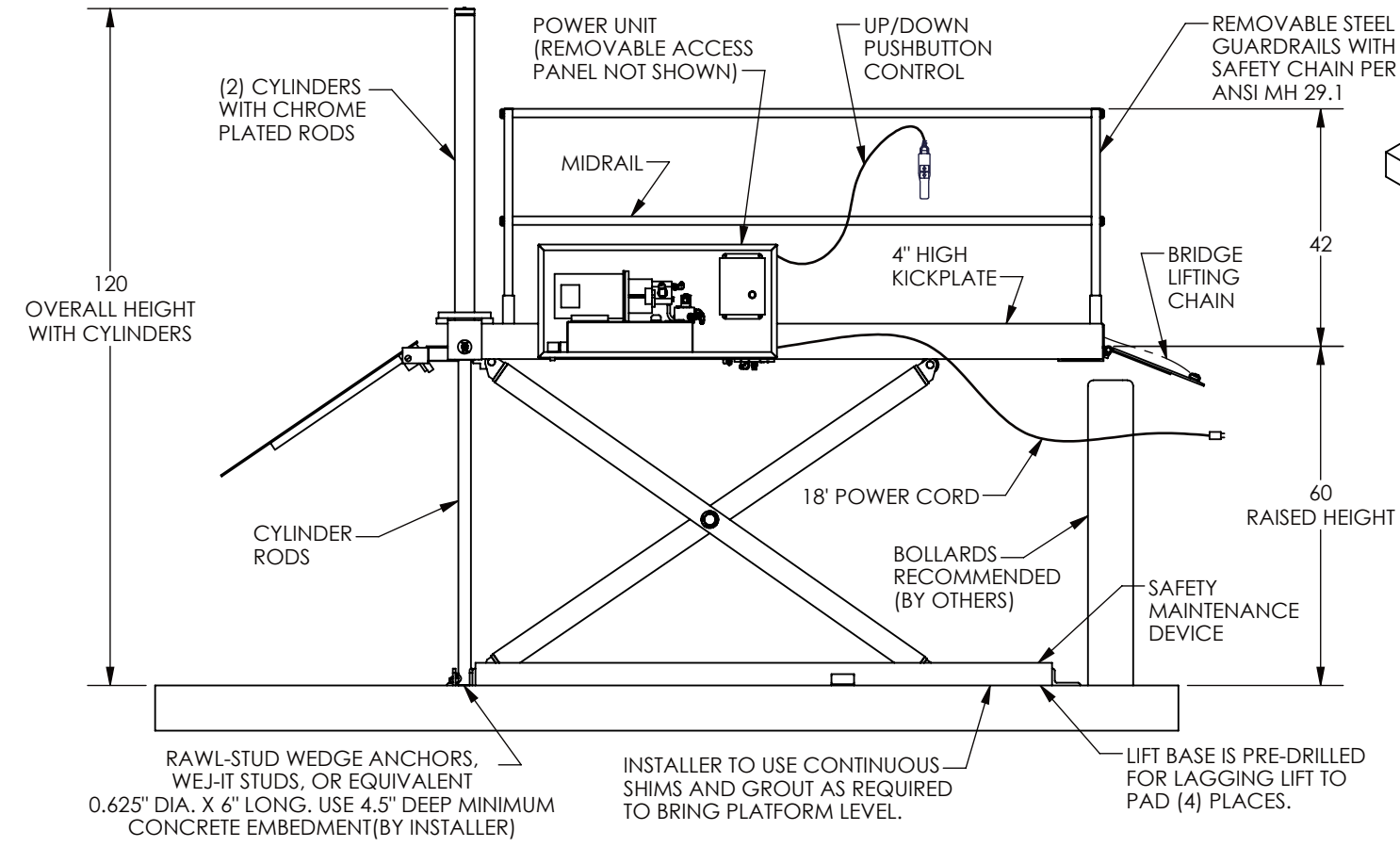
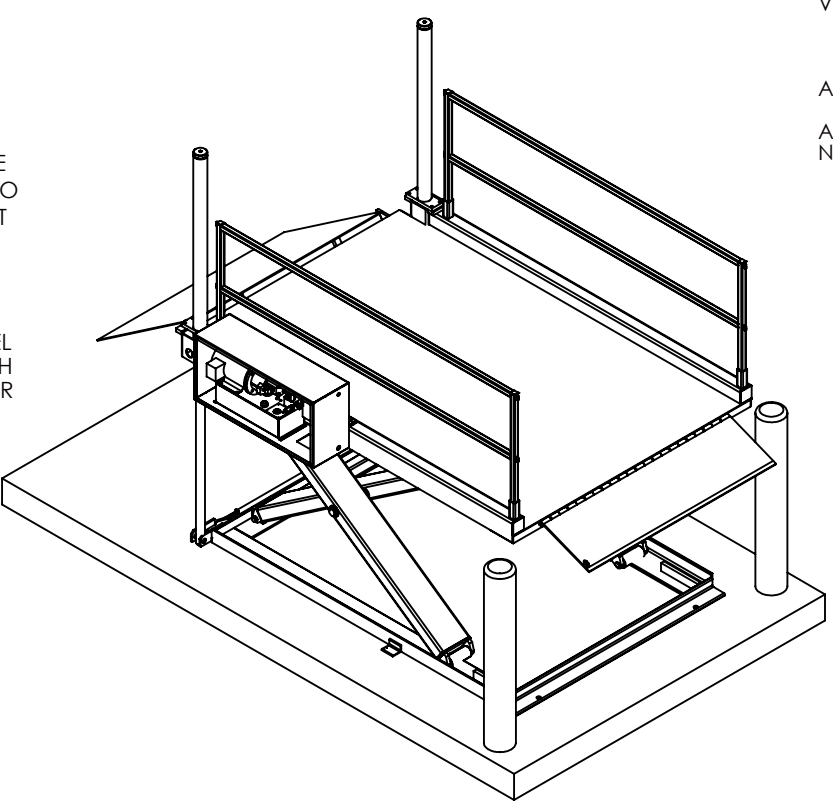
CONTROLS : UP/DOWN PUSHBUTTON PENDANT
TYPE NEMA 1, 3, 3R, 4, 4X

IN NEMA 12 ENCLOSURE : MAGNETIC STARTER, W/ OVERLOAD
230V TO 24 V CONTROL TRANSFORMER.

VOLTAGE: 230V / 3PH
ADVANCE TO SUPPLY NEMA L15-20P PLUG
CUSTOMER TO SUPPLY: NEMA L15-20R RECEPTACLE

APPROXIMATE SHIPPING WEIGHT: 4,795 LBS.

ALL DIMENSIONS ARE GIVEN IN INCHES UNLESS OTHERWISE NOTED.



| | | | | | |
|----------------------|-------------|--|----|--|----|
| ADVANCE LIFTS | | Advance Lifts, Inc. 701 S. Kirk Road St. Charles, IL 60174 | | Phone : 630-584-9881 Fax : 630-584-6837 | |
| SCALE | NTS | REVISIONS | BY | DATE | |
| DATE | . | . | . | . | . |
| DR'N | . | | | | |
| CHKD | . | | | | |
| JOB NAME | | | | | |
| DESC. | MODEL 68710 | | | DWG. | B- |
| | | | | REV. | |