

TL-415 RECESSED TRUCK LEVELERS

2 Year Parts & Labor/10 Year Structural Warranty

These truck levelers have the cylinders mounted completely out of the way beneath the platform. The travel on these units is typically divided with 18" up travel and 18" down travel, but the pit profile can be changed to provide other travel combinations.

**ISO 9001:2015
Certified**



Capacity: 60,000 lbs.
Overall Width: 10 ft. 2 in.
Overall Length: 15 ft. 8.75 in.
Platform Size: 10 x 15 ft.
5 HP Motor
Approx. 3 FPM
36" Travel
Shipping Weight: 5,800 lbs.



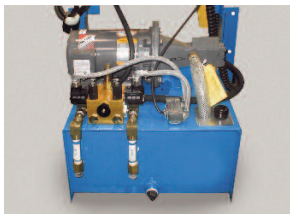
Model# TL-415

SPECIAL FEATURES & BENEFITS

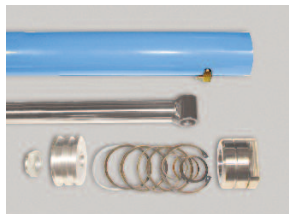
- ▶ All of the electrical controllers are Underwriters Laboratories approved assemblies.
- ▶ Hydraulic anti-interflow system to prevent side to side tilting of platform.
- ▶ Each unit is washed with phosphoric acid, fully primed and then finished with baked enamel.
- ▶ All cylinders are machine grade with clear plastic return lines & internal cylinder stops.
- ▶ All pressure hoses are double wire braid with JIC fittings.
- ▶ Reservoirs are mild steel.
- ▶ All units are equipped with solid steel skirts.

CLICK HERE FOR: [Drawing](#) [Pit Diagram](#) [Specifications](#) [Optional Accessories](#)

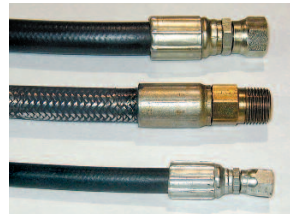
FEATURE DETAILS



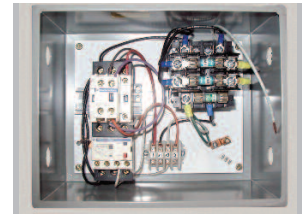
▶ *Power Unit*



▶ *Cylinder*



▶ *Double Wire Braid Hose*



▶ *UL Listed Control Panel*